

# ROAR



## Elon Students Find Museum Inspiration

### In This Issue

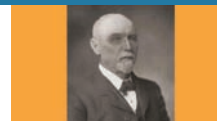
Direction.....	2
Collections.....	3
Guild News.....	7
Mark Your Calendar .....	8



***This Just In***  
New acquisitions  
now on display  
See page 4



***Art Students In  
the House***  
Painting with history  
See page 5



***Belle Meade Society***  
Members fund  
important projects  
See page 6



***Museum Shopping***  
From cute critters to  
stylish umbrellas  
See page 7



**W**e live within the context of history and like The Force (I have always wanted to make a *Star Wars* reference), history “surrounds us and penetrates us; it binds the galaxy together.” History connects—people, places, objects—and the wisdom that comes from knowledge of the past can be used for good or manipulated with Darth Vader-like evil. Curators and scholars know how to use this force, which often takes the form of insightful analysis communicated through publications, film and museum exhibits. But for those with special Jedi-like talents, history can also inspire—mindfulness, action and the arts.

The muse of history is in the Greensboro Historical Museum. It was a wonderful day in January when I walked through our museum galleries and saw college students sitting on the floor, in chairs, leaning over rails, sketchbooks in hand. Elon University was here. On the cover is one artwork by Laura Viksnins, inspired by our 1886 fire engine. The shape of apothecary bottles, colorful details of uniforms and juxtaposed household objects provided inspiration to other artists.

Our new exhibition *Weaving Wonder with Historical Threads*, opening May 21st, is focused on how Greensboro’s history inspired artist Janet Echelman as she developed her aerial sculpture, a highlight of the new LeBauer Park. We will present its story and other public art in the city inspired by history. You will experience something completely different from any other space in the museum. And you, our supporters, will be delighted to see how history can inspire the creation of great art.

May the Force of History be with you. Use it well.

*Carol Ghiorso Hart*  
Carol Ghiorso Hart, Director



**T**he museum board is off to a great start in 2016. I am thankful to be surrounded by wonderful trustees who are not only actively supporting the museum, but supporting the entire Greensboro community through the museum.



As a board, we have agreed on five main goals to help us focus and reinforce the museum’s mission and vision:

- Be an engaged and aligned group of trustees who are passionate about helping the museum
- Continue to change the perception among many in the community who believe the museum is neither relevant nor interesting to them

## Five main goals to help us focus and reinforce the museum’s mission and vision

- Increase and diversify membership
- Increase community partnerships and funding
- Meet or exceed financial goals

In just two months, we have made significant progress in all of these areas through challenging old assumptions and encouraging new thinking. With all the exciting developments around our downtown location, we feel the timing is perfect to reach new audiences and engage the community as never before.

Of course, our most important asset is you. Thank you for supporting the museum through your membership and being our advocates. I assure you that the board is working hard to support Carol and her staff, and that 2016 will be a great year for the museum.

*Chris D. Carlson*

Chris Carlson, President, Greensboro Historical Museum, Inc.

## The Art Around Us

**D**escribing and creating public art is a thought-provoking process. William Cleveland, Director of the Center for the Study of Art & Community, challenges us to consider clarity of intention, accurate documentation and the effect a piece has on the viewer. These touchstones are important in reviewing the impact of any work.

How many pieces of public art have you seen in

### O. Henry as a Young Boy

*By Ogden Deal, 1972*

Commissioned by Greensboro Beautiful, this sculpture was dedicated in Richardson Park on April 26, 1972. The ceremony included an invocation by The Rev. W. Clarkson Porter III, a cousin of the famous author, and comments by sculptor Ogden Deal.



John Page/News & Record

(l-r) Ogden Deal, Chick Bolton and The Rev. W. Clarkson Porter III

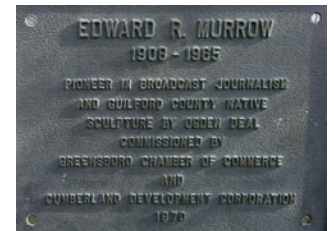
Greensboro? Guilford Courthouse National Military Park hosts some of our earliest monuments, and artists are continually creating new pieces throughout our community.

The museum is a wonderful resource for artists who use historical moments, objects or images for inspiration. We also have sculptures and models in our collections.

### Bust of Edward R. Murrow

*By Ogden Deal, 1971*

This bust of the award-winning journalist and Guilford County native was commissioned by civil rights activist and attorney J. Kenneth Lee and installed at the corner of Friendly Ave. and Murrow Blvd. When the property sold in 1997, plans to discard the work created a community outcry, and it was donated to the museum for Richardson Park.



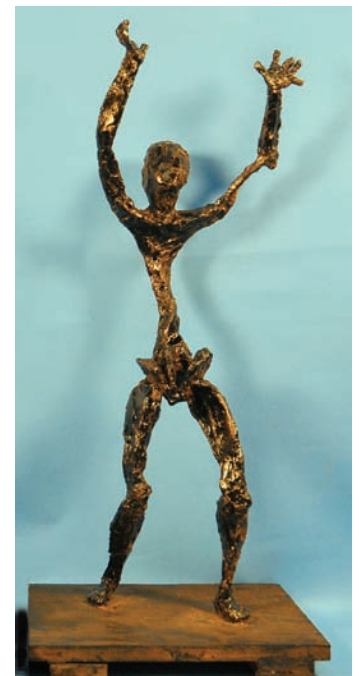
### Two Paths to Freedom

*Plaster Maquettes by Duncan Lewis, 1999*

Collections include scale models of abstract sculptures once located near the intersection of John Dimrey Dr. and Benjamin Benson St. The sculptures, which have been removed and are awaiting repair, tell the story of two enslaved men who gained their freedom in very different ways.

John Dimrey (l), depicted in a crouching position as if hiding, attained his freedom with the assistance of Guilford County Quakers and an informal Underground Railroad network. He was probably among the first enslaved people to make their way from Greensboro to the free state of Indiana.

Freedman Benjamin Benson (r), standing upright with his arms extended as if pleading, was kidnapped from Delaware in 1816 and brought to Guilford County as a slave. With the help of local Quakers, Benson went to court, and eventually a judge ruled in Benson's favor, restoring his status as a freedman, which allowed Benson to return to Delaware.



Susan Webster, Registrar/Curator of Textiles  
Jon Zachman, Curator of Collections



### This Just In!

That's kind of a catchy phrase, right? We hope so, because it's the title of a new case that features pieces recently acquired or conserved as part of the Adopt an Object program.

Dedicating a small case to collections provides us with the opportunity to display objects that might not otherwise be

seen by the public. Periodically rotating pieces within the case will also allow visitors to see and better understand the breadth of objects we collect.

Here are some of the pieces that will be featured in the new case on the mezzanine level in the Lindsay Building. Please visit and share your thoughts about *This Just In!*



#### NAACP Certificate, 1986

Ida Freeman Jenkins was a beloved history teacher at Dudley High School, a faithful member of Providence Baptist Church, and a passionate supporter of Hayes-Taylor YMCA. Among her many memberships and recognitions is this NAACP Certificate of Life Membership.



#### Music Stand, 1895

This cast iron music stand might have been used at First Presbyterian Church more than 100 years ago, in the very same building that is now the museum. It was last in the possession of pastor Dr. John A. Redhead Jr., who served the church from 1945 until 1970.



#### GGO Whiskey Decanter, 1972

The first of ten commemorative decanters issued from 1972-1982 for the Greater Greensboro Open golf tournament, this all-gold piece featuring the GGO crest was one of a dozen presented to local leaders and members of the Executive Committees. A successful promotional piece, the 6000 limited edition decanters available to the public sold out quickly each year.



#### Postcard of YWCA Residence, 1920s

Postcards sometimes provide our only views of long-gone buildings. This one shows the YWCA Residence, which provided rooms for single working women. It was located south of the First Presbyterian Church Graveyard on the site of LeBauer Park.

Elise Allison, Archivist

Susan Webster, Registrar/Curator of Textiles

Jon Zachman, Curator of Collections

## Art Appreciation

**M**elissa Lovingood and her students see the museum a little differently—through chalk pastels and charcoal, that is. Lovingood, an Adjunct Assistant Professor at Elon University, brought her “Approaches to Drawing” class of 20 to the museum in January. She first visited with a group of 140 students last October as part of her art appreciation class at UNCG. When asked why she continued to bring her students to the museum for such a unique purpose, she replied, “The Greensboro Historical Museum has such a rich variety of cultural artifacts for everyone to enjoy and learn from. There are so many amazing items to draw. I continually see new artifacts that I may not have noticed before. Many of the students were not familiar with the local region and the museum gives them a firsthand experience to learn this information. Also, by drawing the artifacts, they gain a richer insight into how or why the artifact was made and appreciate and remember it more. And quite a few students said they would come back again, which I find rewarding.”

Dean MacLeod, Curator of Education



Artist: Julian Rigsby



Artist: Annaliese Jaffe



Artist: Nanny Burke



Artist: Madi Norton



Artist: Sidney Brown



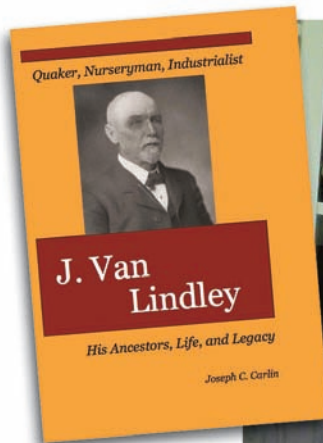


### JOIN THE BELLE MEADE SOCIETY

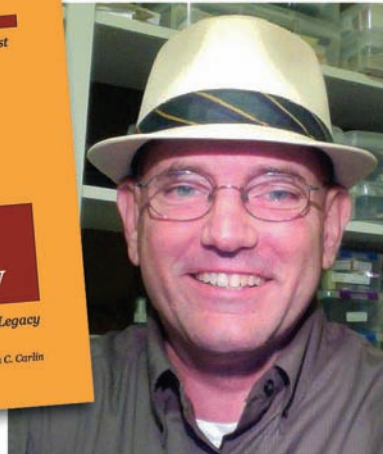
The Belle Meade Society began its work in 1991 to help increase financial support to the Greensboro Historical Museum. The members of the Society renew their memberships at an increased amount to support programs, exhibits and buying important objects for the collection. The Society significantly aids in the financial well-being of the Museum.

You are invited to join the Belle Meade Society! Your increased donation allows you to be able to attend the semi-annual social and presentation on interesting historical topics. These dinner presentations are a fun way to renew old acquaintances and meet others who are dedicated in supporting the Museum.

On Monday, April 25th, Joseph Carlin, author of *J. Van Lindley: His Ancestors, Life and Legacy*, will speak to the Society. J. Van Lindley was instrumental in forming an insurance company that became Jefferson Pilot. He had extensive land holdings along Spring Garden Street



Biographer Joseph Carlin is the featured speaker at April's meeting



and developed the Pomona Terra Cotta company there. In addition, he had a 60,000 tree orchard near Pinehurst and sold land to Isabella Rockefeller which later became Fort Bragg. J. Van Lindley's ancestors owned land where an important Revolutionary War battle occurred. Come hear the interesting details on all of this.

Dr. Will Truslow,  
Belle Meade Society President

#### It's Easy to Join

- <http://greensborohistory.org/join-support/membership>
- Call Mary Allen at 373.2982
- Mail your check, at any amount of \$250+ to

**Belle Meade Society**  
Greensboro Historical Museum  
130 Summit Ave., Greensboro NC 27401

## COMMUNITY HISTORY

### It Happened Here in April, May and June

**April 2, 1936**

Tornado hit E. Lee St., killing 13 and injuring 44

**April 10, 1976**

26th Annual Easter Egg Hunt held at Latham Park

**April 19, 1962**

Eastern Music Festival founded

**April 29, 1939**

Richardson Civic Center opened at 130 Summit Ave., home to Public Library, Historical Museum, Art Center, Red Cross, Community Chest, Boy Scouts and Girl Scouts

**May 3, 1965**

Red Camellia Japonica became the City's official flower



**May 8, 1953**

Atlantic Coast Conference founded at Segefield Country Club

**May 17, 1808**

Town plan adopted by county commissioners

**May 27, 1888**

Early town records destroyed by fire

**June 7, 1998**

Phill McDonald Memorial Plaza dedicated downtown

**June 16, 1947**

A&P Supermarket reopened on Commerce Pl.

**June 24, 1996**

Olympic Games Torch Run held

**June 30, 1830**

Traveling show charged 25¢ to see elephants and tigers

Linda Evans, Community Historian

## MUSEUM SHOP CORNER

### Ready for April Showers and May Flowers

**F**or Spring we are featuring many new products:

*Colorful umbrellas to keep you dry*

*Scarf pins to embellish our beautiful scarves*

*Fun socks to make you smile*

*Small nature notebooks for journaling*

*Precious baby lambs and lions for cuddling*

*Scented pillows to help you sleep*

*...with more baby and decorative items on the way*



We also have our regular assortment of the things you love, like NC pottery, books and cookbooks, local jewelry, soaps and lotions, NC-themed mugs and glassware, Moravian cookies, sauces, Old Mill mixes, special teas and a new shipment of denim aprons made by Wrangler right here in Greensboro.

And...we want you to know that we are one of the only places in town where you can get Greensboro and NC postcards!

Channell Williams, Shop Manager  
Barbara Shanks, Jane Teer, Cathy Battle

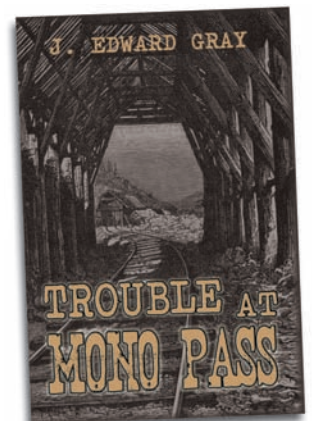
## MUSEUM GUILD

**I**t is Spring and the Guild is active. Programs include a look at railroads after the Civil War by author J. Edward Gray in April and The Anatomy of an Exhibit, a grand finale with museum director Carol Hart and the museum staff, in May.

In addition, we'll journey to Fayetteville on Thursday, May 5th, to visit outstanding museums, a trip open to all museum members. At the Museum of the Cape Fear Complex, we'll stroll through exhibits recalling the rich history of southern NC, glimpse early 20th century life at the 1897 home of E.A. and Josephine Poe, and survey the remains of Arsenal Park, a federal munitions manufacturing site. After lunch, we'll marvel at the heroism of a unique sector of our armed forces from 1940 to the present at the Airborne and Special Operations Museum. The trip ends at the NC Veterans Park.

Meetings begin at 10:00 a.m. with the program at 10:30. Museum members and guests are always welcome. For more information about programs and the trip, please call me at 456.5305.

Betty K. Phipps, First Vice President





## CALENDAR OF EVENTS

### APRIL

**Monday, April 18 at 10 a.m.**

#### ***Museum Guild Meeting***

*Getting America Back on Track after the Civil War*

Hear from member and docent

J. Edward (Jim) Gray, author of

*Trouble at Mono Pass and New Garden.*

Guests welcome

**Monday, April 25 at 6:30 p.m.**

#### ***Belle Meade Society***

#### ***Members Program***

*J. Van Lindley: His Ancestors, Life and Legacy*

Be amazed and intrigued as shared by biographer Joseph Carlin.

See page 6

### MAY

**Thursday, May 5**

#### ***Guild Trip to Fayetteville***

See page 7

**Monday, May 16 at 10 a.m.**

#### ***Museum Guild Meeting***

*Anatomy of an Exhibit*

Discover from Director Carol Ghiorso

Hart how an exhibit takes shape.

Guests welcome

**Friday, May 20**

#### ***First Lady Dolley Madison born here in 1768***

**Monday, May 30**

Museum offices closed

### JUNE

**Thursday, June 2 at 2 p.m.**

#### ***Volunteer Appreciation Party***

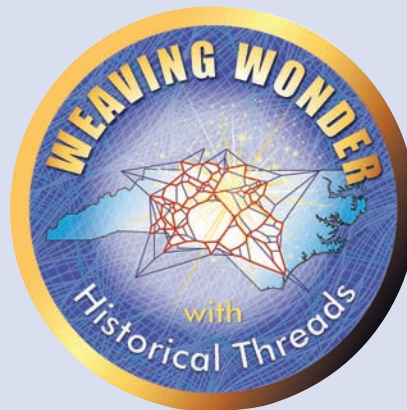
**Sunday, June 5 from 12 – 5 p.m.**

#### ***Parisian Promenade at Bicentennial Garden***

Caldwell Center has fun for kids

**Tuesday, June 14**

#### ***Flag Day***



## ***Weaving Wonder With Historical Threads***

Members-Only preview

Friday, May 20

Public Opening

Saturday, May 21

**On the Cover:** *The General Greene steam fire engine, as painted by Elon University student Laura Viksnins*

**For more information, visit [GreensboroHistory.org/events](http://GreensboroHistory.org/events)**

Like Us On  
facebook 



#### **Greensboro Historical Museum**

130 Summit Avenue  
Greensboro, NC 27401  
Telephone (336) 373-2043

Open Tuesday - Saturday

10 AM - 5 PM

Sunday 2 PM - 5 PM

Free Admission

#### **David and Rachel Caldwell Historical Center**

3211 West Cornwallis Drive  
Greensboro, NC 27410  
Telephone (336) 373-3681

Open Tuesday and Saturday

10 AM - 5 PM

Free Admission

***GreensboroHistory.org***

### **Greensboro Historical Museum, Inc. 2016 Board of Trustees**

Chris Carlson, <i>President</i>	Andrew Medley, <i>Asst. Treasurer</i>
Cham Edmiston, <i>Vice President</i>	Tyson Hammer, <i>Secretary</i>
Courtney Ageon, <i>Treasurer</i>	Jennifer Poindexter, <i>Asst. Secretary</i>

Uma Avva	Josie Gibboney	Sheri Masters
Anna Brady	Chris Gorham	Michele Perrell
Bonita Brown	James Griffin	Rose Marie Ponton
Mike Cammack	Dan Hayes	Britt Preyer
Brian Clarida	Patrick Haywood	Justin Ricketts
Julie Copeland	Bob King	Susan Robinson
Lynn Donovan	David Kolosiecke	Will Truslow
Gayle Fripp	Tiffany W. Lam-Balfour	William Hale White
Whitney Frye		Bernard Yevin



## **CORPORATE SUPPORTERS**



ROAR, a publication of the Greensboro Historical Museum, Inc., is published with private funds and produced by museum staff and trustees. The Historical Museum is a division of the Library Department of the City of Greensboro.