

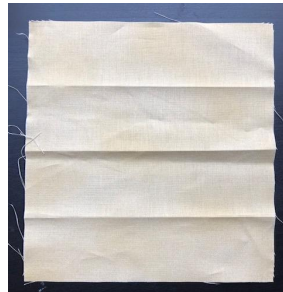
Women's Suffrage Face masks

Create your own Face Mask right at home to promote your historical learnings of Women's Suffrage!

Ask your parental guardian or parent for assistance while making your mask!



Start by selecting a fabric of your liking (8"x8-1/2")



Fold your fabric into 4 equal sections



Take the top end of your Mask and fold it to the middle crease, do the same for the bottom



Your mask should now look like this!



Pin the edges of each side of the mask in order to have room for the elastic band.

Pin vertically 1/2" from the edge of the mask. (An example is shown on the left of this box)



After stitching a 1/2" from the edge of your mask on both ends,

Neatly fold that crease to the back of your mask, in order to make a loop area for your elastic.



It should look like this.

Make sure that you are measuring your elastic and sewing measures according to your facial structure and size.

Ask a parent, teacher or guardian for assistance!

Women's Suffrage Face masks

Create your own Face Mask right at home to promote your historical learnings of Women's Suffrage!

Ask your parental guardian or parent for assistance while making your mask!



Stitch both sides and loop your elastic in and tie it to your liking.



Once this step is completed. You now officially have made your own face mask! Now it's time to decorate!



While creating your mask, here are some things to keep in mind:

- After Kansas suffragists adopted the state symbol of the sunflower for a campaign in 1867, yellow became the symbolic color of the national women's suffrage movement. Supporters were urged to "show your colors" by wearing yellow ribbons, buttons, and sashes.
- While gold was the only color used by all US suffrage organizations, the purple, white, and gold was used only by the National Woman's Party in the United States. The organization described the meaning of these colors in a newsletter published December 6, 1913: "Purple is the color of loyalty, constancy to purpose, unswerving steadfastness to a cause. White, the emblem of purity, symbolizes the quality of our purpose; and gold, the color of light and life, is as the torch that guides our purpose, pure and unswerving."

What are some creative ways that you can incorporate symbolic gestures to your mask?